

ASHRAE Rochester



VOLUME 7, ISSUE 3

NOVEMBER 1, 2011

INSIDE THIS ISSUE:

Officer /
Committee
List 2

Events
Calendar 3

President's
Message 4

Meeting Info 5
(NOV 9
DEADLINE)

Mrs. Lynn G.
Bellenger 6

ASHRAE 7
Winter
Conference

Student Zone 8
(DEC 1
DEADLINE)

YEA 10

Valentines
Dance 11

Job Postings 12

Meeting
Minutes 13

New Members 15

PAOE Points 15

Society News 16

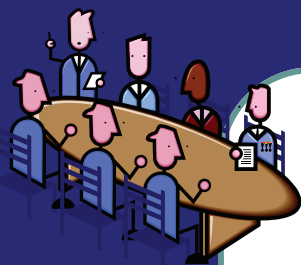
Governmental
Affairs 18

ASHRAE Presidential Member Bellenger Remembered



On behalf of the Rochester Chapter of ASHRAE and the Board of Governors, I would like to offer our sincere condolences to the Bellenger Family and to all at Pathfinder Engineers and Architects LLP. Lynn was truly an inspiration to all of us at ASHRAE. Her legacy will continue through the people she touched throughout her career. She will be missed.

*Jeffrey C. Ellis
ASHRAE Rochester Chapter President 2011-12*



Chapter Officers

President

Jeffrey Ellis
585-232-3440
ellis@airsystemsbalancing.com

President Elect

Michelle Sommerman
585-232-5135
msommerman@bergmannpc.com

Vice President/Tech

Robert Wind
585-341-3172
rwind@ibceng.com

Secretary

Edward J. Burns
585-739-7548
ejb@mechtechhvac.com

Treasurer

Christina Walter
585-486-2148
cmwalter@trane.com

Committee Chairs

CTTC/Programs

Michelle Sommerman 585-232-5135
msommerman@bergmannpc.com

CTTC/TEGA

Jeff Davis 585-381-3360(136)
jdavis@turnerengineering.com

CTTC/ Refrigeration

Michael Nohle 585-545-5522
mikenohle@aol.com

Historian

Lee Loomis 585-738-3079
leeloom@aol.com

Membership

Bill Clark 585-507-1961
wjclark@dayasi.com

YEA

Chris Lukasiewicz
585-381-3360 (135)
clukasiewicz@turnerengineering.com

Board of Governors

William Murray (3rd Year)
585-641-7121
bmurray@ec4b.com

Tim Duprey (3rd Year)
585-330-6430
DupreyT@ifsinc.net

Eric C. Smith (2nd year)
585-381-3360
esmith@turnerengineering.com

Jeff Close (2nd year)
585-289-6816
Jeff.close@pres-services.com

William J. Clark (1st Year)
585-507-1961
wjclark@dayasi.com

Jaimee Reynolds (1st year)
585-325-6004
jreynolds@pathfinder-ea.com

Beth Smith (1st year)
585-272-0110
bsmith@vpsupply.com

Student Activities

Al Rodgers 585-325-6004
arodgers@pathfinder-ea.com

Newsletter Editor

Jaimee Reynolds 585-325-6004
jreynolds@pathfinder-ea.com

Attendance & Reception

Timothy Duprey 585-330-6430
DupreyT@ifsinc.net

Building Simulation User's Group (BSUG)

Bill Bishop 585-325-6004
wbishop@pathfinder-ea.com

Webmaster

Kevin Wind 585-263-1280
kwind@rochester.rr.com

Research Promotion

Jeff Close 585-289-6816
Jeff.close@pres-services.com

Beth Smith 585-272-0110(3010)
bsmith@vpsupply.com

ASHRAE 2011-2012 Meeting Schedule

Date	Event	pdh / Theme	Location	Schedule
09/12/11	Annual ASHRAE Clambake James Bittker, NYSERDA New Construction Program	Membership Promotion	Burgundy Basin	5:00 PM
10/10/11	Dick Sherren Rooftop Wind Restraints	(1) pdh available	Mario's	12:00 PM
11/14/11	Stanley Mumma, DL Region III Chilled Surfaces and DOAS	(1) pdh available <i>pending</i>	Mario's	12:00 PM
12/12/11	BIM - Joint ASPE Meeting John Jansen, Imaginit Technologies	Research Recognition	Mario's	12:00 PM
01/09/12	Tribute to Lynn Bellenger TBD Bill Bishop - 5 min on BSUG	Awards Student (1) pdh available <i>pending</i>	RIT	6:00 PM
02/10/12	Annual ASHRAE Valentines Dinner Dance	---	Inn on Broadway	7:00 PM
02/13/12	Steve Beck ASHRAE IAQ Guide, current work on Building Performance Metric	Membership Promotion () pdh available	Mario's	12:00 PM
03/12/12	Drury Crawley, DL Region III AEDG's to Net-Zero Buildings and Future Trends in Simulation	Research Promotion (1) pdh available <i>pending</i>	Mario's	12:00 PM
04/09/12	Refrigeration Tour Wegmans Market St - TBD	Student Night (1) pdh available <i>pending</i>	TBD	TBD
05/15/12	Annual ASHRAE Golf Outing and Picnic	---	Ravenwood Golf Club	9:30 AM Golf 4:30 - 8:00 Picnic

Mission Statement

ASHRAE will advance the arts and sciences of heating, ventilation, air conditioning, refrigeration and related human factors to serve the evolving needs of the public and ASHRAE members.

“Advancing HVAC&R to serve humanity and promote a sustainable world”



Vision Statement

- will be the global leader in the arts and sciences of heating, ventilation, air conditioning and refrigeration.

- will be the foremost, authoritative, timely and responsive source of technical and educational information, standards and guidelines.

- will be the primary provider of opportunity for professional growth, recognizing and adapting to changing demographics, and embracing diversity.



Jeff Ellis, 2011-2012 President

I would like to thank Dick Sherren of Kinetics Noise Control for his presentation on Wind Restraint Requirements at our October Lunch Meeting. Our November meeting will feature ASHRAE Distinguished Lecturer Stanley Mumma and the topic will be “Chilled Surfaces and DOAS.” We hope to have (1) pdh available for this presentation.

Our chapter will be hosting a visitor from Region 1 next month. Om Teneja (RVC Student Activities) will be sitting in on our Board of Governors Meeting and will be taking some time during our lunch meeting to share what’s going on with student activities at the regional level. We hope to see a good turn-out for Om’s visit and to hear a great presentation.

Please take time to explore the updated Rochester ASHRAE Chapter website at <http://rochester.ashraechapters.org/> and let us know what you think.



Monthly Meeting

November ASHRAE Meeting (1 PDH will be available for attendees)

Monday, November 14th 2011

Location: Mario's Italian Steakhouse 2740 Monroe Ave, Rochester

Time: 12 PM with Buffet Lunch Served

Cost: \$25.00, PayPal On-Line *or* cash/check at door

Speaker: Stanley A. Mumma, PhD, P.E., ASHRAE Distinguished Lecturer,
Professor of Architectural Engineering, Pennsylvania State University

Chilled Surfaces (Ceiling, Floors and Beams)

This presentation will focus on chilled surfaces. Chilled Ceilings, Floors, and Beams have been met with skepticism by many US engineers due to problems encountered with systems installed in the 1960's, as well as an on-going perception that condensation, capacity and cost are insurmountable problems. Dr. Mumma will forthrightly address these three issues. And he will elaborate on the performance of integrated DOAS Chilled Ceiling, Floor or Beam systems in the areas of human comfort, safety—including terrorist resistance, and LEED/sustainable design. Both design and operating experiences from buildings employing these technologies will be discussed. Finally, the chilled ceiling, floor or beam engineering design process will be laid out, including emphasis on the need for DOAS when chilled ceiling/floor/beam projects are undertaken.

Dr. Stanley Mumma is currently Professor Emeritus of Architectural Engineering at Pennsylvania State University. Prior to joining Penn State in 1984, he was a General Motors Corporation project engineer for three years between his undergraduate studies in Mechanical Engineering at the University of Cincinnati, and his graduate work at the University of Illinois at Urbana-Champaign. Since earning his Ph.D. in Mechanical Engineering in 1974, under the mentorship of Dr. Will Stoecker, he has also held faculty positions at Ohio State University and Arizona State University. In the first third of his academic career, his research focused principally on solar and alternate energy. Then his interests changed to innovative ways of meeting ASHRAE Standard 62 in an energy efficient fashion. That work has led to his current intense interest in dedicated outdoor air systems (DOAS). He writes extensively on the subject (see <http://doas-radiant.psu.edu/papers.html>). Two of his publications were recipients of ASHRAE best paper awards. He has also received ASHRAE's Distinguished Service Award, the E.K. Campbell Award of Merit, and the grade of Fellow. Currently, Dr. Mumma is a member of several Technical Committees and the Society Publishing Committee.

Please RSVP no later than noon Wednesday, November 9th to Tim Duprey

Phone: 585.402.5285 or Email: dupreyt@ifsinc.net

Respectfully,

Tim, Attendance Chair

Attention Members:

Just a reminder that all members that reserve a spot for the monthly meeting will be responsible for that reserved space.

Members have until 12:00 pm the day of the RSVP deadline to cancel their meeting reservation.

Failure to comply with this rule will result in the attendee being responsible for the payment of that reservation.

ASHRAE Rochester Chapter Officers

Mrs. Lynn G. Bellenger, PE, Fellow ASHRAE

ATLANTA— Immediate past ASHRAE President Lynn G. Bellenger, who served as the first woman president in the Society's 116 year history, passed away Wednesday, Oct. 19. She was president for the 2010-11 Society year, with her term ending in June 2011.

Mrs. Bellenger, P.E., Fellow ASHRAE, was a recognized expert in energy management, with a strong focus on the need for energy modeling to help create and refine more efficient buildings. She was a partner with Pathfinder Engineers & Architects, Rochester, N.Y.

“We at ASHRAE are greatly saddened by the death of our former president and our friend,” Ron Jarnagin, ASHRAE president, said. “Her lifelong passion for engineering excellence resonated within our membership and our industry, inspiring us through her belief that engineers will lead an energy revolution with innovation. Through her service, she showed that there is a path available to all who wish to extend the influence of engineering principles to better serve the world we live in.”

As ASHRAE president, Mrs. Bellenger focused on Modeling a Sustainable World, sharing her thoughts about the role of modeling tools and how all involved in the built environment industry must come together to take advantage of “the rich opportunities for optimizing building performance through a collaborative approach from the beginning.” [You can watch Lynn deliver her speech here.](#) You may also read her presidential speech as it appeared in the [August 2010 ASHRAE Journal here.](#)

In an interview last year, Mrs. Bellenger talked about her involvement in energy efficiency and how much has been put in recent years on the need to save energy. “One of the cool things about the sustainability movement is that it has ignited a passion in people that is changing the world. That passion has brought a sense of energy and excitement to the industry and attracted people who are committed to designing and operating sustainable buildings. I don't see that changing in the future,” she said.

To honor the remarkable legacy that she leaves, ASHRAE announced on Friday the creation of the Lynn G. Bellenger Memorial Fund, which will be used to recognize women in engineering through scholarships or other means. [Please click here if you would like to donate.](#) Otherwise, contributions can be mailed to Lynn G. Bellenger Memorial Fund c/o ASHRAE 1791 Tullie Cir. NE Atlanta, GA 30329.

Mrs. Bellenger was a recipient of an ASHRAE Exceptional Service Award, a Distinguished Service Award, two first-place ASHRAE Technology Awards and the Lincoln Bouillon Membership Award.

She received a Bachelor of Science in mathematics from Principia College and a Master of Science in environmental science from Rutgers University.

Funeral arrangements are private. If you would like to send your condolences please email publicrelations@ashrae.org. Messages will be assembled into a remembrance for the Bellenger family.



Join ASHRAE in Chicago!

2012 ASHRAE Winter Conference
Jan. 21-25
Palmer House Hilton
Chicago



Technical Program — join your fellow members and industry leaders to discuss and examine the latest topics in the building industry, such as high performing buildings and integrated design.

Virtual Conference — if you can't make it to Chicago, take advantage of the knowledge shared in the technical program with the Virtual Conference.

AHR Expo — The ASHRAE co-sponsored AHR Expo takes place Jan. 23–25 at McCormick Place. www.ahrexpo.com.

ASHRAE Certification — all six certification programs are being offered: Building Energy Assessment Professional; Building Energy Modeling Professional; Commissioning Process Management Professional; High-Performance Building Design Professional; Healthcare Facility Design Professional; and Operations and Performance Management Professional.

ASHRAE Learning Institute — five Professional Development Seminars and 14 Short Courses are offered, including a new course on the basics of combined heating and power systems and updates to courses covering Standards 62.1 and 90.1 reflect changes in the 2010 versions of these standards.

www.ashrae.org/chicago

Welcome to the Student Zone

UNDERGRADUATE ENGINEERING SCHOLARSHIPS

Annual Application Deadline: December 1

Scholarships are awarded for the academic year *following* the application deadline beginning with the fall semester. Re-applications accepted from former scholarship applicants and recipients who meet the current criteria.

Available to full-time undergraduate engineering or pre-engineering students pursuing a Bachelor of Science or Engineering degree in a course of study that traditionally has been a preparatory curriculum for the HVAC&R profession. Applicants must have a cumulative Grade Point Average (GPA) of at least 3.0 on a scale where 4.0 is the highest and/or a class standing of no less than the top 30% and be enrolled in a program at a post-secondary educational institution that meets at least one of the following criteria:

- 1) The institution hosts a recognized ASHRAE student branch </students/page/702>
- 2) The program is accredited by the Accreditation Board for Engineering and Technology (ABET) www.abet.org in the USA
- 3) The program is accredited by an equivalent agency outside the USA that is part of the Washington Accord <http://www.washingtonaccord.org/Washington-Accord/> or has signed a Memorandum of Understanding with ABET <http://www.abet.org/international.shtml>

For a list of schools with an ASHRAE student branch or accrediting agencies recognized by ASHRAE for the purpose of granting a scholarship, click on the links provided above or contact Lois Benedict at lbenedict@ashrae.org or 678-539-1120 (direct).

Applicants must submit the following, with their application, postmarked on or before the application deadline of **December 1**:

1. Official transcript of college grades (if college grades are not available by the application deadline, submit official transcript of high school grades and verification of current college enrollment)
2. Three letters of recommendation: one from an instructor or faculty advisor, a current or past employer, and another character reference. In the case of institutions with an ASHRAE student branch, include a letter from the faculty advisor of that branch (may be one of the three letters of recommendation).

\$10,000

- **Willis H. Carrier Scholarships** – *Two one-year \$10,000 undergraduate engineering scholarships available annually. Scholarship was established by The Carrier Corporation in memory of its founder, who's known widely for his numerous and significant contributions to establishing air conditioning as an industry. Carrier installed the world's first scientifically designed air conditioning system in 1902.*
- **Reuben Trane Scholarships**—*Four two-year \$10,000 undergraduate engineering scholarships awarded \$5,000 per year over two years. Scholarship was established in memory of The Trane Company founder, an engineer, inventor & business executive, whose manufacturing enterprise ranks today as one of the world's largest in the HVAC&R industry.*

\$5,000

Frank M. Coda Scholarship— *A one-year \$5,000 undergraduate engineering scholarship available annually. Scholarship was established in memory of ASHRAE's former Executive Vice President, who served the Society from 1981-2004.*

\$3,000

- ASHRAE General Scholarships (2 available)
- ASHRAE Memorial Scholarship
- Alvin B. Newton Scholarship
- Duane Hanson Scholarship
- Henry Adams Scholarship

<http://www.ashrae.org/students/>





ASHRAE

Student Member Renewal Form

American Society of Heating, Refrigerating and Air-Conditioning Engineers, Inc.
ASHRAE • 1791 Tullie Circle NE • Atlanta, GA 30329-2305

By completing this membership form, you are agreeing to comply with the ASHRAE Code of Ethics: <http://www.ashrae.org/codeofethics>.

Name: _____ Member No.: _____

Street Address: _____ City, State/Province: _____

Country Postal Code: _____ Phone: _____

E-mail: _____ Chapter: _____

ASHRAE Email Usage Policy - ASHRAE respects the privacy rights and communication preferences of its members. To support ASHRAE's commitment to sustainability, ASHRAE actively seeks to reduce the amount of paper and mail used to communicate Society information. By supplying your email address, you are agreeing to receive electronic communications from ASHRAE, with the knowledge that you may opt-out of certain types of electronic communication once you become a member. Occasionally ASHRAE makes under proper safeguard physical address mailing lists – not email – to third parties for HVAC&R technology related direct mail purposes. If you DO NOT wish to receive these physical mailings, please check here.

ASHRAE Society dues include \$6.00 (USD) for ASHRAE Journal. This amount is not deductible from Membership dues.

To receive your subscription to the ASHRAE Journal, please answer the following questions by entering the appropriate codes in the spaces provided.

Which best describes your firm? 86 **Make correction here.**

11. Consulting Engineering	41. Commercial Facility	71. Wholesaler or Distributor
12. Architect/Architectural & Eng Services	42. Government, Healthcare, Education	83. Library
15. Design/Build	43. Utility	84. Technical, Professional or Trade Association
21. Contractor	51. Manufacturer/HVAC&R Equipment	86. Student
26. Property Mgmt & Dev	61. Manufacturer's Representative	91. Other (Please Specify)
31. Industrial Facility	62. Sales Engineering	_____

Which best describes your title? Y **Make correction here.**

B. President	G. Vice President Eng. Chief Engineer	R. Sales Engineer, Sales	X. Instructor, Professor
C. Partner	K. Design Engineer	S. Purchasing Agent	Y. Student
D. Associate	L. Project/Application Engineer	T. Draftsperson	Z. Librarian
E. Owner	O. Facility Engineer/Manager	U. Estimator	ZZ. Other (Please Specify)
F. Vice President	P. Research/Development Engineer	W. Technician	_____

Please sign and date even if no changes are made.

Signature _____ **Date** _____

MEMBERSHIP PRICE: \$20.00

Because you are a student member, you may purchase the 2009 ASHRAE Handbook Fundamentals Volume at a reduced price by selecting one of the options below:

- _____ CD only \$39.00
- _____ Book I-P units \$49.00
- _____ Book SI units \$49.00

ASHRAE Journal Air Mail Delivery: Optional service for members outside the U.S. Remit \$50.
**The CD includes both IP and SI units.



TOTAL: _____

Method of payment: VISA Master Card American Express Diner's Club Check or money order enclosed*

Card No.: _____ Expiration date: _____

Signature: _____ Date: _____

*Checks must be made payable to ASHRAE in U.S. funds drawn from a U.S. bank.



ROCHESTER CHAPTER COMMITTEE REPORT 2011 October 21

MISSION STATEMENT

The primary objective for the YEA Committee is to enhance our member benefits for young professional ASHRAE members by identifying activities and services focused on their needs.

- National YEA Committee

OLD BUSINESS

Plan technical programs:

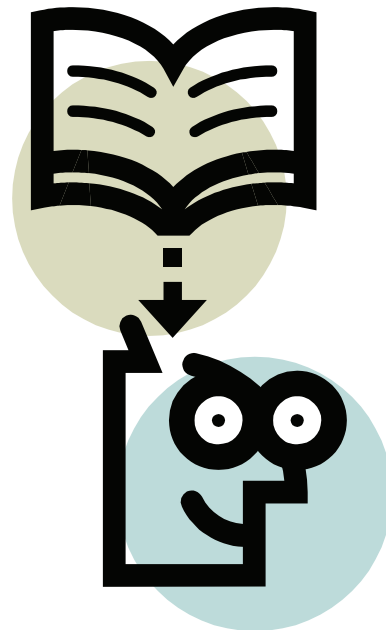
- ASHRAE Group Learning Texts Program
- Review benefits of ASHRAE membership
- Fundamental Sessions
- ASHRAE standards
- System design
- EIT/PE Exam study groups

Plan technical tours:

- Seneca Park Zoo
- RIT Ice Rink with ice skating
- Blue Cross Arena with Amerks hockey game

YEA Leadership Weekend: Spring 2012

Several members interested in attending



NEW BUSINESS

Next YEA Committee Meeting: to be determined

The Winfield Grill (647 Winton Road, Rochester, NY 14609)

Next YEA Social Hour: to be determined

MacGregors' (300 Jefferson Road, Rochester, NY 14609)

ASHRAE Group Learning Texts Program:

Copy of "Fundamentals of Water System Design" textbook obtained

Need volunteer teachers

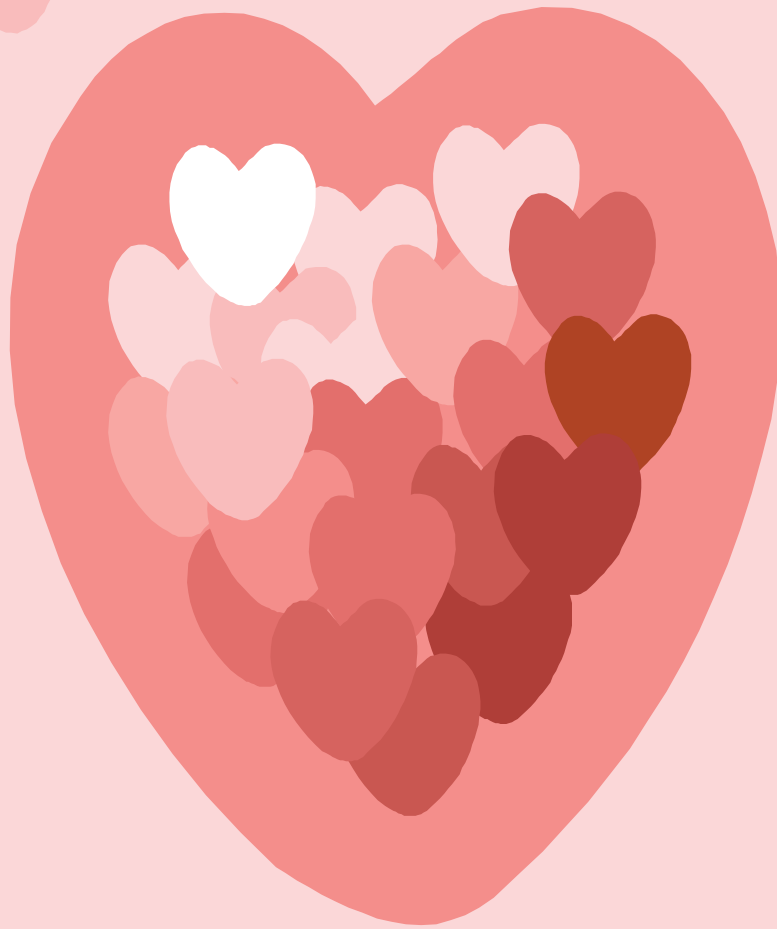
Student Outreach:

Contact Monroe Community College

Plan "career night" to help students with resumes and discuss careers in HVAC

SAVE THE DATE

February 10, 2012



Valentines Dinner Dance

Inn on Broadway



This section of the newsletter is reserved for those firms wishing to advertise their desires to hire from the Chapters Membership.

If you are interested in utilizing this FREE service provided by the Rochester Chapter, please contact our Chapter President, Jeff Ellis (585.232.3440) or by email ellis@airsystemsbalancing.com

This service is available to ASHRAE members for any local firm in our industry looking for knowledgeable persons in the HVAC&R industry.

HVAC Estimator—R.F. PECK

The R.F.PECK.CO., Inc is a commercial HVAC manufacturer's representative firm who has been in business for over 50 years. We specialize in the distribution, filtration, measurement and control of airflow, as well as heating, ventilating and air conditioning equipment sales. Through our affiliation with quality manufacturer's, we offer support to architects, engineers, designers and contractors by providing high quality equipment, competitive pricing and prompt service.

Our continued success has created a need for an additional inside sales/estimator in the Rochester, New York area.

We require an energetic and driven person that has engineering background or HVAC experience that is willing to grow into this position. The job consists of: mechanical blueprint reading, takeoffs and submittal preparation. We offer training and a competitive payment and benefits package.

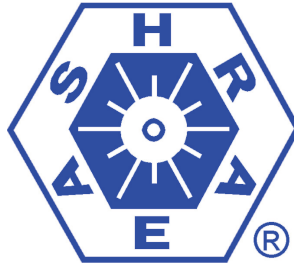
Email resume to jbrowe@rfpeck.com.

Sales Engineer—Meier Supply

Regional HVAC/R Wholesaler seeks experienced Sales Engineer to work with the Rochester, NY area engineering community to assist with design and specification of HVAC equipment systems. Candidate will demonstrate strong customer service skills, excellent technical knowledge, possess a 4 year Engineering degree, and enjoy being a member of a successful team.

This full time position offers a comprehensive benefit package that includes health insurance, paid vacation, holidays, a matching 401K plan, as well as many other nice perks. Replies will be kept confidential.

Please forward resumes to spost@meiersupply.com.



**AMERICAN SOCIETY OF HEATING, REFRIGERATING
AND AIR CONDITIONING ENGINEERS**

ROCHESTER, NEW YORK CHAPTER

September 9, 2011 - 12 NOON

LOCATION: VP Supply

President	Jeffrey Ellis	X
President Elect/Program	Michelle Sommerman	X
Vice President/Tech Session	Robert Wind	
Secretary Picnic/Golf	Ed Burns	
Treasurer	Christina Walter	X
Immediate Past President/CRC	Jim Browe	
Awards/Student Activities	Al Rodgers	
Buyers Guide	Chuck White	
Hiistorian	Lee Loomis	
Board of Gov. (1) Membership	Bill Clark	X
Board of Gov. (1)	Beth Smith	X
Board of Gov. (1) Newsletter	Jaimee Reynolds	X
Board of Gov. (2)	Eric Smith	X
Board of Gov. (2) Research	Jeff Close	
Board of Gov. (3)	William Murray	X
Board of Gov. (3) Attendance	Tim Duprey	
Website	Kevin Wind	
Refrigeration	Michael Nohle	
Nominating	Jeff Davis	
Valentine's Dance	Jody M. McGarry	
Publicity	Mark Kukla	
YEA	Chris Lukasiewicz	X

Meeting Minutes

Roll Call: The above noted individuals were present.

Call to Order: 12:00pm by Jeff Ellis

Minutes:

Previous Meeting minutes motioned to approve by Jaimee Reynolds. Seconded by Bill Murray. Minutes accepted.

Treasurer Reviewed Budget:

Reference attached. Clambake raised approx. \$800 this year.

2011-2012 Program Year:

Program schedule is all set (reference attached) with exception of April refrigeration tour. Need to get PDH submission requirements from speakers reviewed.

CTTC – No report.

News Letter – Submissions for RES are required by the 10th of the month. Electronic newsletter 1 week prior to the end of the month. Will look into adding a research fund “thermometer” meter to the newsletter (similar to the chapter website).

Membership – 1 New member – John Kelly from Crosby Brownlie attending clambake. Member delinquent report reviewed for follow-up. Lee Loomis to check old members for report, committee for PAOE points.

Attendance – 93 Scheduled for Clambake.

Historian – There are currently four (4) delinquent members (down from last month) and most on the list from last month have been contacted.

Nominating – No report.

Publicity – No report.

Valentines Dance - No report.

Research – The chapter would like to get the Full Circle Award this year (competing with another chapter to get the \$\$ in by November 1st). Six officers need to donate for the chapter to be eligible: President, Pres. Elect, VP, Secretary, Treasurer and RP Chair. Can send check for \$100 to Beth Smith. Any questions contact Beth or Jeff E.

Buyers Guide – From Jeff E. - Still on track for 12/31. Awards and pastpresident list will be moved to the chapter website. A pdf of the Buyer's Guide will be available to subscribers so a hard copy can be printed.

Meeting Minutes (continued)

YEA – Discussed offering group learning sessions thru ASHRAE Learning Institute. Discussed Young Engineer Award. YEA is currently looking for older ASHRAE members to help with course outlines. 1st course to be water systems design – date and time TBD. Chris and Jamie to present to the RIT student group today on ASHRAE.

Refrigeration – No report.

Student Activities – No report.

Old Business –CRC reimbursements have been received by Jeff and submitted to National. The chapter website has been updated – added a research funds “thermometer” graphic. The Audit committee meeting is today.

New Business – The Region 1 Chapter Visit by Om Taneja (Student Activities) will be on November 14th. The BOG meeting will take place that morning at Mario’s and Om will attend the meeting.

Next Meeting: November 14th at time TBD Location: Mario’s

The meeting was adjourned at 1:15.



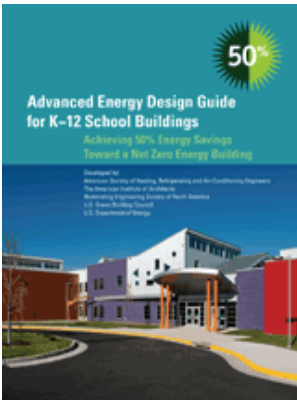
WELCOME TO OUR NEW MEMBERS

Mr Jeffrey A Wiedrick of Bergmann Associates

2010-2011 Presidential Award of Excellence Summary

Chapter #	Chapter Name	Chapter Members	Member Promotion	Student Activities	Research Promotion	Chapter Technology Transfer	History	Chapter Operations	Chapter PAOE Totals
11	Rochester	233	50	175	0	50	110	50	435

Society News— 50% Energy Savings K-12



Advanced Energy Design Guide for K-12 School Buildings: Achieving 50% Energy Savings Toward a Net Zero Energy Building is available as a free download at www.ashrae.org/freeaedg.

ATLANTA—Inefficient lighting, uncontrolled plug loads and poorly insulated roofs are just few of the factors that can contribute to a failing grade in energy consumption for K-12 school buildings.

Fortunately, guidance is available to help design teams constructing K-12 school buildings cut annual energy use by 50 percent or more using off-the-shelf technology.

To help ensure schools receive an A+ in energy efficiency; owners, engineers, designers, architects and others on the building team are encouraged to download the free Advanced Energy Design Guide for K-12 School Buildings: Achieving 50% Energy Savings Toward a Net Zero Energy Building. The guide is the second to be released in a series which provides recommendations to achieve 50 percent energy savings when compared with the minimum code requirements of ANSI/ASHRAE/IESNA Standard 90.1-2004, Energy Standard for Buildings Except Low-Rise Residential Buildings.

Advanced Energy Design Guides, or AEDGs, allow owners, contractors, consulting engineers, architects and designers to easily achieve advanced levels of energy savings without detailed energy modeling or analyses. Written in partnership with ASHRAE, the American Institute of Architects, the Illuminating Engineering Society of North America, the U.S. Green Building Council and the U.S. Department of Energy, the guides are available for free in electronic form at www.ashrae.org/freeaedg.

“Significant research demonstrates that the quality of the physical environment affects student performance,” Shanti Pless, chair of the steering committee, said. “An environment that includes appropriate lighting, sound, temperature, humidity, cleanliness, color and air quality can help students learn better. In many cases, improving these attributes can also reduce energy use.”

The new guide features easy-to-follow recommendations for various climate zones and how to implement tips via a series of real-life school construction case studies. Also included is information on integrated design, including best practices, as a necessary component in achieving 50% energy, and the inclusion of a performance path; specifically, offering guidance for early stage energy modeling and annual energy use targets to help with goal setting

Additional design tips include:

- High performance building envelope that is better than Standard 90.1-2004.
- Different ways to daylight 100 percent of the floor area of classrooms, resource rooms, cafeterias, gymnasiums and multipurpose rooms for two thirds of school hours.
- Methods to achieve space-by-space interior lighting power densities that are, on average, 40 percent better than Standard 90.1-2004.
- Ways to reduced exterior (façade, walkway, parking lot and drive) lighting energy consumption.
- Recommendations for computers, vending machines, kitchen cooking equipment, walk-in refrigeration equipment, kitchen exhaust hoods and service water heating.
- Three different HVAC system types that achieve significant energy savings over a typical system.
- Recommendations for commissioning and measurement and verification to ensure that energy savings potentials are realized.

The AEDG also addresses the notion that energy efficient buildings are more expensive.

“Owners should not expect energy-efficient schools to cost more; they can cost more, but they shouldn’t have to. The tips, guidelines and tables included in the newest AEDG for K-12 schools can set building owners on their way to more energy efficient, productive schools in a cost efficient manner,” Pless said.

The 50% Advanced Energy Design Guide series follows an earlier six-book series that provided guidance to achieve 30 percent savings. The ultimate goal is to provide guidance to achieve net zero energy buildings; that is, buildings that, on an annual basis, produce more energy than they consume.

ASHRAE, AIA, IES, DOE and USGBC are currently developing the third guide in the 50 percent series, which will focus on medium/big box retail. Publication is targeted for winter of 2012, followed by large hospitals in the spring of that year.

ASHRAE and Penn State Partner on Building Efficiency Hub



Philadelphia - A newly signed memorandum of understanding brings together ASHRAE and Pennsylvania State University (Penn State) to improve energy efficiency and reduce the environmental impact of buildings through the Greater Philadelphia Innovation Cluster (GPIC) for Energy-Efficient Buildings.

ASHRAE and Penn State signed the memorandum today to pursue common objectives related to GPIC. GPIC is a 24-member consortium, being led by Penn State, which has been designated as an Energy Innovation Hub of the U.S. Department of Energy and is located at the Navy Yard in Philadelphia, Pa. The goals of GPIC are to transform the building retrofit industry from serial fragmentation to integrated systems methods, to improve design tools, building systems, public policies, market incentives and workforce skills needed to achieve a 50 percent reduction of energy use in buildings, and to stimulate private investment and quality job creation in Greater Philadelphia and beyond.

“ASHRAE is looking forward to working closely with Penn State and other GPIC members on improving energy efficiency and reducing carbon emissions,” Ron Jarnagin, ASHRAE president, said. “GPIC represents an exciting step forward in finding ways to increase energy efficiency. ASHRAE is happy to bring the knowledge and technical expertise of its volunteer members to the table to help create a broader knowledge of energy efficient and sustainable building practices.”

“ASHRAE brings a tremendous amount of technical knowledge and experience that will be very useful to the GPIC as we strive toward solving one of the nation's most serious energy problems by dramatically reducing energy consumption in commercial buildings. Together, we can create quality jobs in the region and boost the building industry,” Henry Foley, executive director of the GPIC and vice president for research for Penn State, said.

ASHRAE will assist in the GPIC effort in several areas, including research, education, certification, standards and guidelines and by applying the society's Building Energy Quotient (bEQ) program to buildings at the Navy Yard. ASHRAE may also help obtain As-Designed and In-Operation bEQ ratings for buildings in Greater Philadelphia and can ensure that GPIC considers use of ASHRAE certifications to support its objectives.

ASHRAE, founded in 1894, is an international organization of some 50,000 people. ASHRAE fulfills its mission of advancing heating, ventilating, air conditioning and refrigerating to serve humanity and promote a sustainable world through research, standards writing, publishing and continuing education.

Governmental Affairs Update

Welcome to ASHRAE's Government Affairs Update. Along with the Government Affairs webpage, these periodic e-mail updates feature information on government affairs related activities of interest to ASHRAE members and others interested in the built environment. Archives of previous updates are available from the government affairs webpage (<http://www.ashrae.org/advocacy>).

Please pass this information on to interested colleagues who also may subscribe from the ASHRAE Government Affairs webpage.

If you have any recommendations regarding content, or have questions about or would like to participate in Washington Office activities, please contact ASHRAE Government Affairs staff at (202) 833-1830 or washdc@ashrae.org.

ASHRAE Government Affairs Update, 10/07/11

[University of Maryland Wins Solar Decathlon](#)

[Canada Announces \\$78 Million, Two-Year Investment in Energy Efficiency in Buildings, Industries, Vehicles, and Consumer Appliances](#)

[Connecticut, Maryland, Pennsylvania, and Vermont Have/Are Preparing to Modify their Building Energy Codes](#)

[Washington, DC Engineering Public Policy Internship Seeks ASHRAE Student Applicants](#)

[Midwest Alliance Hosts Discussions on Codes, Standards, and Strategies](#)

[Building a Grassroots Network – One Chapter at a Time](#)



University of Maryland Wins Solar Decathlon

The University of Maryland won the 2011 Solar Decathlon for its WaterShed house, which sought to address water and energy shortage issues.

“Maryland is a well-experienced team. After taking second place in 2007, they rested and regrouped in 2009 and came to West Potomac Park in 2011 focused and determined to win,” said Solar Decathlon Director Richard King. “In addition, Maryland’s Watershed is a beautiful house, judged first place in Architecture, which also performed impeccably in measured contests. This team mastered their strategies to ensure they excelled in all 10 contests.”

Additional information on the University of Maryland’s WaterShed house is available at http://www.solardecathlon.gov/team_maryland.html#nogo.

ASHRAE served as a supporting sponsor of the 2011 Solar Decathlon. For more information on ASHRAE's involvement with the Decathlon, please visit [/students/page/solardecathlon11](#).

Canada Announces \$78 Million, Two-Year Investment in Energy Efficiency in Buildings, Industries, Vehicles, and Consumer Appliances



The Canadian Ministry of Natural Resources recently announced a plan to improve energy efficiency, reduce costs to consumers, and support job growth. This will be accomplished in part by establishing a stronger National Energy Code for Buildings with provinces and territories, and new home energy rating systems. More information can be found at <http://www.nrcan.gc.ca/media-room/news-release/81/2011-09-07/forest/2709>.

Connecticut, Maryland, Pennsylvania, and Vermont Have/Are Preparing to Modify their Building Energy Codes

- Connecticut will finalize its adoption of the 2009 IECC today (October 7);
- Maryland is in the process of adopting the 2012 IECC and expects to finalize the process early next year. The Department of Housing and Community Development (DHCD) is holding public hearings to discuss the update with stakeholders;
- Pennsylvania's new Uniform Construction Code Review and Advisory Council will hold hearings this fall on the new ICC model codes, including the 2012 IECC. This will be the first set of codes to be considered by the new council;
- Vermont's updated Residential Building Energy Standards (RBES), based on the 2009 IECC, took take effect on October 1.



Additional, in-depth information is available at <http://www.energyefficiencymatters.org/neeps-policy-tracker/>.

Washington, DC Engineering Public Policy Internship Seeks ASHRAE Student Applicants

ASHRAE is now accepting applications for the 2012 Washington Internship for Students of Engineering (WISE) program. The WISE program provides selected participants with a unique opportunity to interact with and learn from government officials, professional societies, and others who are involved with crafting national public policy that affects the engineering profession and building industry.

Applicants must be ASHRAE student members. Applications are available at [/advocacy/page/1226](#), and must be postmarked or emailed by **December 31, 2011**.

Midwest Alliance Hosts Discussions on Codes, Standards, and Strategies

Nearly 50 state and municipal employees, building code officials, nonprofit advocates, public policy professionals, and utility representatives met October 5 – 6 in Chicago, Illinois at the Midwest Energy Efficiency Alliance's (MEEA) Second Annual Building Energy Codes Conference to further the conversation about advancing the energy efficiency movement in the 13 – state region covered by the Alliance.

Conferees (including ASHRAE Government Affairs staff) participated in spirited discussions about how to best encourage states and localities from Missouri to Michigan to adopt, comply with, and enforce up-to-date high-performance energy standards and codes, such as ASHRAE 90.1 –2010 and 189.1–2009. Major themes of discourse included:

- engaging utilities in efforts to enhance the rate of energy code compliance;
- best practices discovered by states in their U.S. Department of Energy – and MEEA – funded pilot programs studying the measurement and reporting of code compliance; and
- third-party enforcement of energy performance standards.

As the conference drew to a close, attendees offered suggestions for next year's event – notably, discussing strategies for better communicating the need and tangible benefits of advanced codes and standards to those within the building sector historically opposed to such advancements; and an open dialogue with state and local policymakers.

Building a Grassroots Network – One Chapter at a Time

Prior to the MEEA conference, ASHRAE staff met with the ASHRAE Illinois Chapter's Board of Governors, including its new Government Affairs Chair. Out of these discussions came some actionable items that you and other ASHRAE members can take in your area to promote and protect your profession as well as positioning yourself as a policy leader and technical expert with policymakers. To name just a few:



- Meeting with local leaders of like-minded organizations (e.g., other engineering societies, architects, “green” building groups) and building alliances now rather than waiting until you sorely need them; [alerting ASHRAE Government Affairs staff](#) to public policy issues arising in your community;
- Advocating for “Engineering Week” with your state and local government; and
- Planning a “Day at the Capitol” or a “Day at City Hall” during which ASHRAE members meet with the decision-makers who represent them and ask them to support pro-ASHRAE public policies.

To learn more about getting involved in ASHRAE's grassroots advocacy efforts, [contact ASHRAE's Washington, DC office](#).